

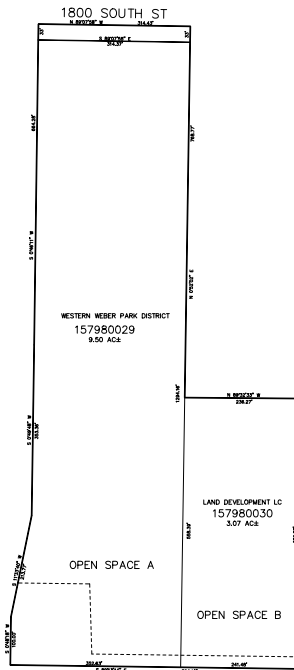
PART OF THE NW.1/4, OF SECTION 28, T.6N., R.2W., S.L.B. & M.
TAYLOR LANDING PH 1A 1ST AMENDMENT

798

TAXING UNIT: 514

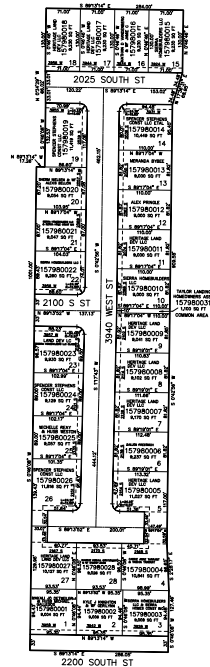
IN WEBER COUNTY
 SCALE 1" = 200'

SEE PAGE 78-4



SEE PAGE 78-4

SEE PAGE 78-4



SEE PAGE 78-4

10' UTILITY & DRAINAGE EASEMENTS EACH
 SIDE OF PROPERTY LINES AS INDICATED
 BY DASHED LINES EXCEPT AS OTHERWISE
 SHOWN.

FOR COMPLETE ENG DATA SEE
 ORIGINAL DEDICATION PLAT IN
 BOOK 93, PAGE 83-84 OF RECORDS.